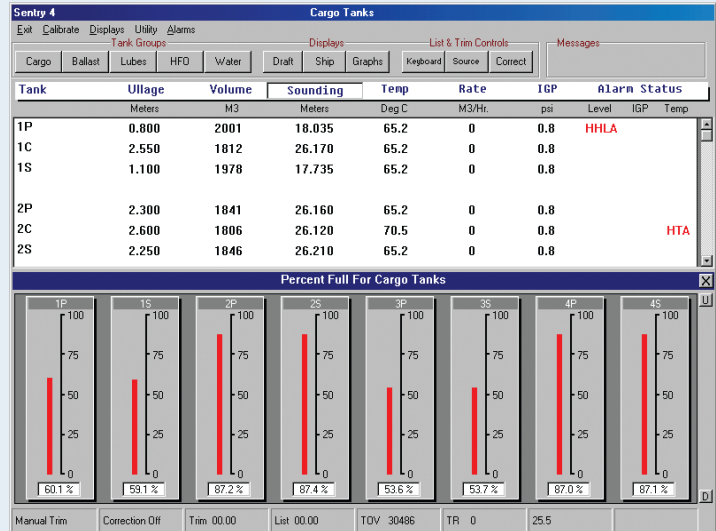
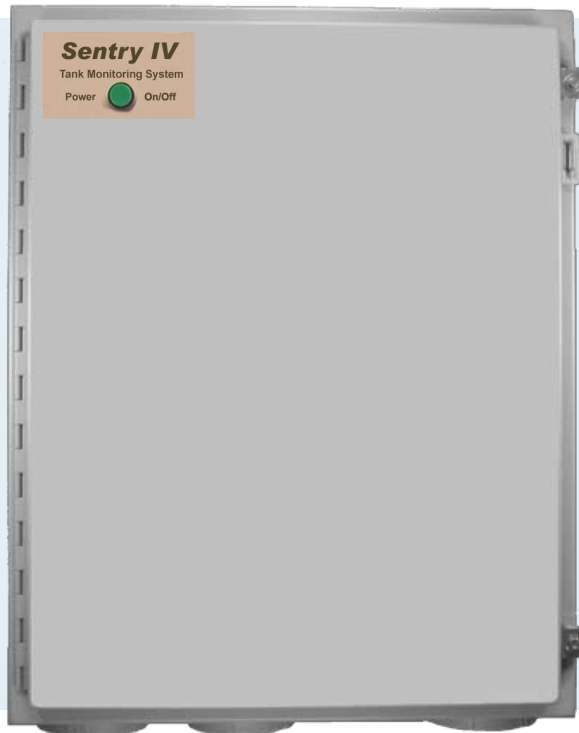


JOWA USA

Sentry IV Tank Gauging System



Description:

The Sentry IV level gauging system is a cost competitive, computer-based solution for today's value minded customer. Tank level data from Metritape level sensors is sent to a central processing unit and displayed on a color monitor with a user friendly Windows-based interface. This easy information access and control makes Sentry IV the most advanced system in its price range. The Sentry IV system offers significant advantages over other gauging methods, yet can be installed and operated at a much lower cost.

Optional Independent High Alarm protection functions can be added to a full height Sentry IV gauging system. This cost effective solution is achieved by adding a second resistance-tape sensor within the same stillpipe. Both sensors connect to Sentry IV's electronics.

Advantages

- One sensor technology can serve cargo, ballast, draft and service
- Full height and Independent High Alarm combined within a single deck penetration and one cable run
- Integral temperature detectors allow level and temperature readings from one tank penetration
- Digital tabular and analog bar graph presentation of tank levels for easy operator use
- Long term sensor stability and reliability
- Optional inert gas pressure measurement
- Easy installation during modular construction

Sentry IV Tank Gauging System

Specifications

Power: 115/230 VAC±30%, 47 - 63 HZ

Power Isolation: Isolation / transient protection

Intrinsic Safety: Class 1, Div 1, Groups A,B,C,D

Channels: 240 maximum

Relays: 8 user definable, 2 horns, 1 fault, 2 API

Alarm Annunciation: Audible horn with acknowledge

Enclosures (Wall Mount):

1 - 60 channel maximum

Size: 762 mm H x 610 mm W x 233 mm D
(30" H x 24" W x 9.16" D)

1 - 120 channel maximum

Size: 762 mm H x 914 mm W x 233 mm D
(30" H x 36" W x 9.16" D)

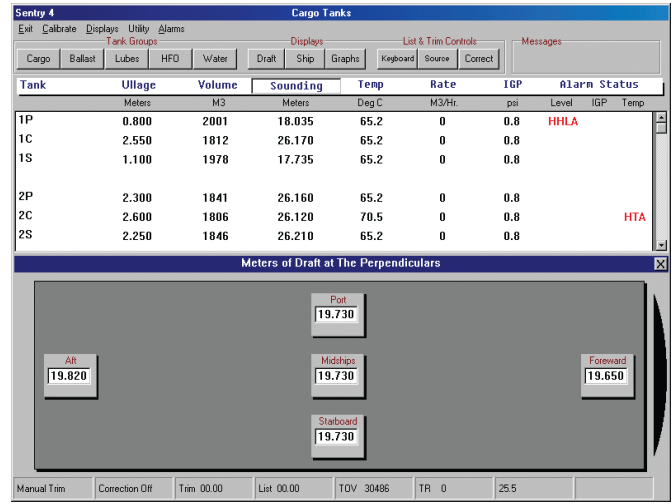
Monitor: 17" flat console or desk mount

Operating Temperature: 0°C to 50°C (32°F to 122°F)

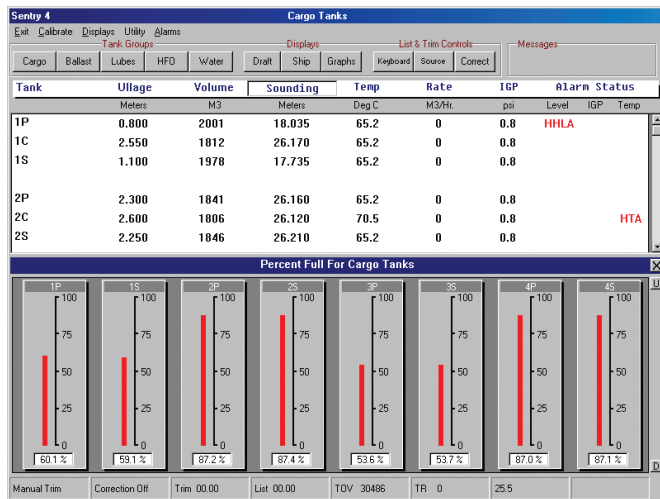
Displays

Tank	Ullage	Volume	Sounding	Temp	Rate	IGP	Alarm Status
	Meters	M3	Meters	Deg C	M3/Hr	psi	Level IGP Temp
1P	0.800	2001	18.035	65.2	0	0.8	HHLA
1C	2.550	1812	26.170	65.2	0	0.8	
1S	1.100	1978	17.735	65.2	0	0.8	
2P	2.300	1841	26.160	65.2	0	0.8	
2C	2.600	1806	26.120	70.5	0	0.8	HTA
2S	2.250	1846	26.210	65.2	0	0.8	
3P	2.740	1790	16.085	65.2	0	0.8	
3C	2.500	1817	26.220	65.2	0	0.8	
3S	2.720	1792	16.105	65.2	0	0.1	LPA
4P	2.360	1834	26.100	65.2	0	0.8	
4C	2.780	1785	25.940	65.2	0	0.8	
4S	2.340	1836	26.120	65.2	0	0.8	
5P	2.810	1782	25.725	65.2	0	0.8	
5C	2.920	1769	25.780	65.2	0	0.8	
5S	2.770	1786	25.770	65.2	0	0.8	

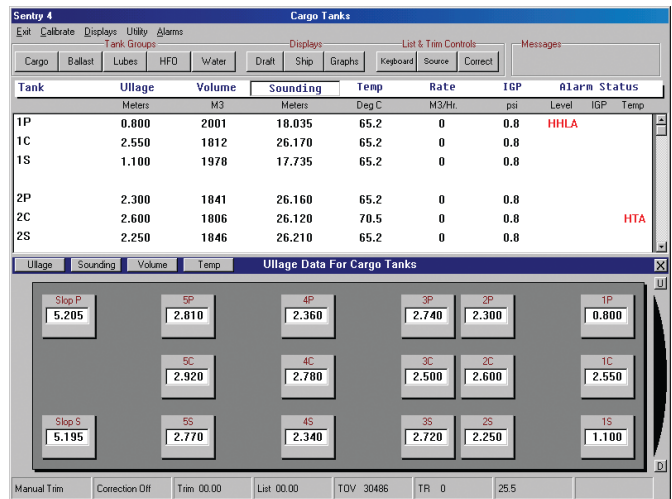
Tabular Display



Draft Display



Bar Graph Display



Ship's Plan Display

Disclaimer:

This is not a specification and all information is provided in good faith. Since conditions of use are beyond the control of JOWA USA, Inc., the information contained herein is without warranty, whether express, implied or otherwise. Final determination as to the suitability, merchantability or fitness of any information, material or product for a particular purpose, or any patent infringement, is the sole responsibility of the user. JOWA USA, Inc. does not assume liability for injury arising from the use of the information, material or product, and assumes no liability for any damages, whether direct, indirect, consequential, special, incidental, punitive or otherwise. For additional information regarding JOWA USA, Inc.'s limited warranty, refer to the Terms and Conditions that are currently in effect.

JOWA USA

JOWA USA, Inc.

59 Porter Road

Littleton, MA 01460-1431 USA

Tel: +1 978-486-9800 Toll free: 800-861-1560

Fax: +1 978-486-0170

E-mail: info@jowa-usa.com