

JOWA Consilium

Rollie Level Detector (RLD)

Features:

- Low Cost Level Gauge
- Accurate to $\pm 1/8$ "
- Simple Tank Top Installation
(2 inch NPT Connection)
- Connects directly to JOWA Consilium's
MC2200 and SC1000 Series Displays
- Maintenance-free
- Suitable for tanks from 1 to 10 feet

Description:

The Rollie Level Detector is used where accurate and inexpensive level monitoring is required. The sensor works on the simple and proven principle of buoyancy. The float rod is connected to a cam that rotates with changing liquid level. The angular position of the cam is determined by a patented Hall effect measuring technique that translates cam position to liquid level. The sensor mounts to a standard 2 inch NPT nipple and provides $\pm 1/8$ inch accuracy.

The model RLD1 is constructed of materials that are suitable for non-hazardous petroleum products. Alternate materials can be selected for use in a wide variety of liquids.

When connected to the MC2200 it provides a cost effective inventory monitoring system with remote or local access. For single tank installations the SC1000 display unit provides a low cost level monitoring solution for tanks 5 feet and under.



Rollie Level Detector (RLD)

Operating Principle:

The sensor works on the simple principle of buoyancy. The float rod is connected to a cam that rotates with changing level. The angular position of the cam is determined by a patented Hall effect measuring technique that translates cam position to liquid level.

Installation:

The sensor is installed through a standard 2 inch NPT pipe nipple and secured with a supplied lock nut. For alternate connections a customer supplied adapter is required. See Specifying Sensor Length below.

Specifying Sensor Length:

The sensor can be built for tanks up to 10 feet in diameter/height. Attach a 2 inch NPT nipple to the tank top. If your tank has a larger fitting you must supply a reducing bushing or other adaptor to attach the 2 inch nipple. Measure from tank bottom to the top of the 2 inch mounting nipple (LS). This dimension and the tank height (HT) must be supplied to build the correct length sensor.

Minimum Installation Clearance:

As shown on the drawing below, a minimum clearance above the pipe nipple is required to install the sensor. This distance is half the sensor height plus six inches.

Technical Specifications:

Sensor Length: 1 to 10 feet (one inch increments)

Operating Temperature Range: 5 to 140° F (-15 to 60° C)

Accuracy: ± 1/8"

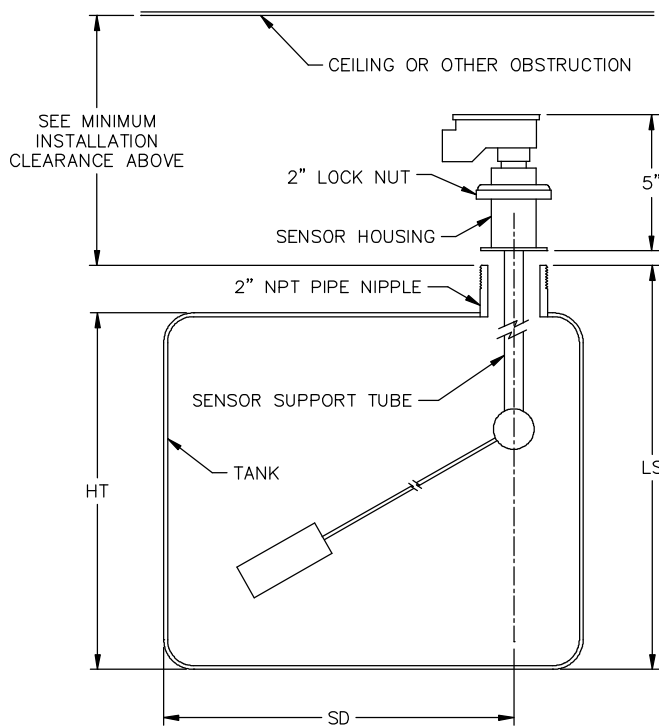
Wetted Materials: Acetal, Polypropylene, Stainless Steel (other materials available on request)

Output: Sensor output is a voltage that must be connected to a SC1000, MC2200 or other appropriate device to provide a calibrated output. Contact JOWA Consilium for a complete system design. Requires 3-wires between electronics and sensor.

Power: Excitation is supplied by the electronics.

Weight: 2 lbs.

Typical Installation



Notes:

1. The Swing Distance (SD) must be at least 1/2 the height (HT) plus 15% to allow the float to swing freely.
2. A minimum, permanent clearance of 6 inches above the tank mounting nipple is required.

Disclaimer:

This is not a specification and all information is provided in good faith. Since conditions of use are beyond the control of JOWA Consilium US, Inc., the information contained herein is without warranty, whether express, implied or otherwise. Final determination as to the suitability, merchantability or fitness of any information, material or product for a particular purpose, or any patent infringement, is the sole responsibility of the user. JOWA Consilium US, Inc. does not assume liability for injury arising from the use of the information, material or product, and assumes no liability for any damages, whether direct, indirect, consequential, special, incidental, punitive or otherwise. For additional information regarding JOWA Consilium US, Inc.'s limited warranty, refer to the Terms and Conditions that are currently in effect.

JOWA Consilium

JOWA Consilium US, Inc.
59 Porter Road
Littleton, MA 01460-1431 USA
Tel: 978-486-9800 Toll free: 800-861-1560
Fax: 978-486-0170 E-mail: info@jowa-consilium.com
www.jowa-consilium.com